

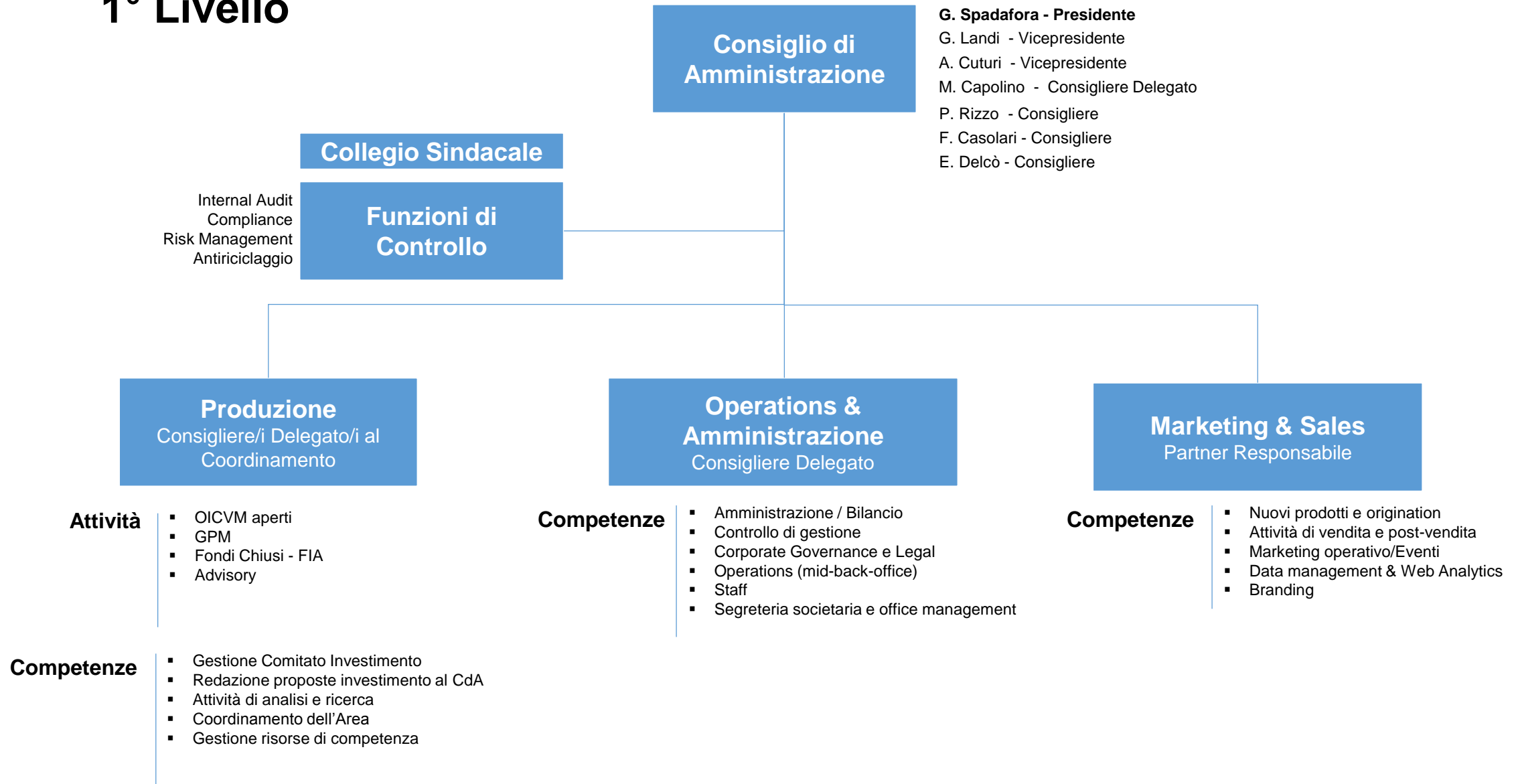
2018

Anthilia
Capital Partners
SGR

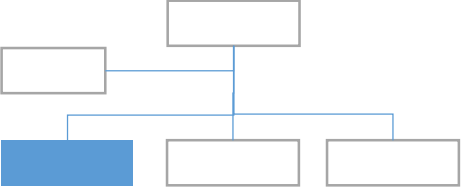
Organigramma



1° Livello



2° Livello



Produzione
Consigliere/i Delegato/i al Coordinamento
A. Cuturi
P. Rizzo

OICVM

Risorse totali = 8

- Partner
 - A. Cuturi
 - P. Rizzo
 - M. Ratzinger
 - G. Sersale
 - M. Orioli
- Senior
 - A. Chouillou
 - S. Chelini
 - P. Rinaldi

GPM

Risorse totali = 1

- Partner
 - G. Sersale

Fondi Chiusi

Risorse totali = 5

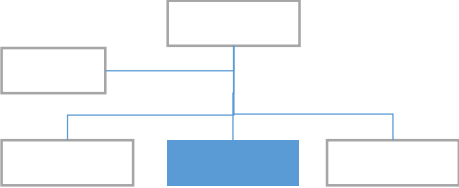
- Partner
 - G. Landi (ad interim)
- Senior
 - B. Ellero (Resp. PD)
 - L. Novati (PD)
 - S. Righetti (PD)
- Junior
 - F. Colli Vignarelli (PD)

Advisory

Risorse totali = 4

- Partner
 - M. Orioli
 - L. Cuppini
- Senior
 - G. Piazzoli
- Junior
 - G. Derada Troletti

2° Livello



Operations - Amministrazione
Consigliere Delegato
M. Capolino

**Amministrazione,
Bilancio &
Controllo**

Risorse totali = 1

Junior | ▪ L. Rizzi

**Corporate
Governance &
Legal**

Risorse totali = 1

Senior | ▪ K. Bolzoni

Operations
Mid – Back Office

Risorse totali = 3

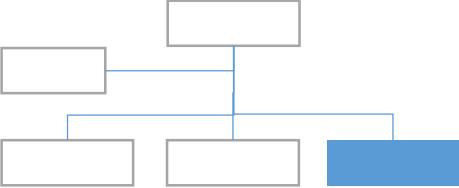
Senior | ▪ C. Gipponi
▪ V. Marangoni
▪ S. Bottini

**Staff
Segreteria
Societaria**

Risorse totali = 2

Junior | ▪ J. Narzisi
▪ G. Garavaglia

2° Livello



Marketing & Sales
Partner Responsabile
D. Colantonio

Mercato e Prodotti

Risorse totali = 3

- Partner
 - D. Colantonio
 - M. Orioli
- Senior
 - M. Soriani

Marketing operativo

Risorse totali = 1

- Junior
 - E. Locorotondo

Vendita e post-vendita

Risorse totali = 3

- Partner
 - D. Colantonio
- Senior
 - G. Cavalli
 - A. Luise

Data Management & Web Analytics

Risorse totali = 2

- Senior
 - V. Picciolini
- Junior
 - L. Catalucci